

1. TV series & American cities

We all love to sit down and watch TV series sometimes, let it be comedy or thrilling action & crime, but as you may have noticed, the settings are not changing too often. It's easy to recognize some of the major U.S. cities, let us give it a try!

Guess which! Study the list of TV series and the corresponding pictures below and name the city where the stories take place! (Total score: 3 points)



How I Met your Mother, White Collar, Orange is the New Black

New York



Two and a Half Men, Californication, Modern Family

Los Angeles



ER, According to Jim, Happy Endings

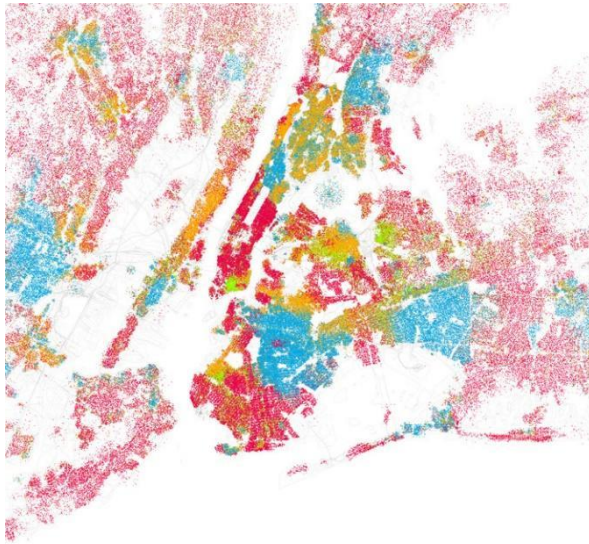
Chicago

2. Segregation in American cities

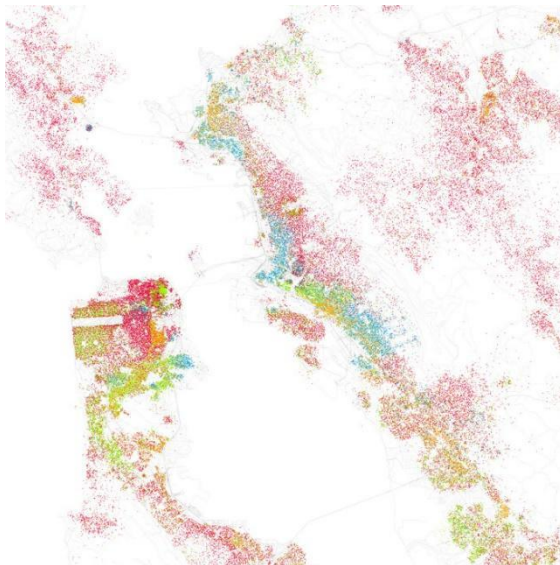
Segregation and racial conflicts are of main concern in the U.S., no wonder that very detailed maps are available. Looking at these you should be able to identify some of the largest and most peculiar cities of the States! (Total score: 12 points)

Study the maps below and name the cities!

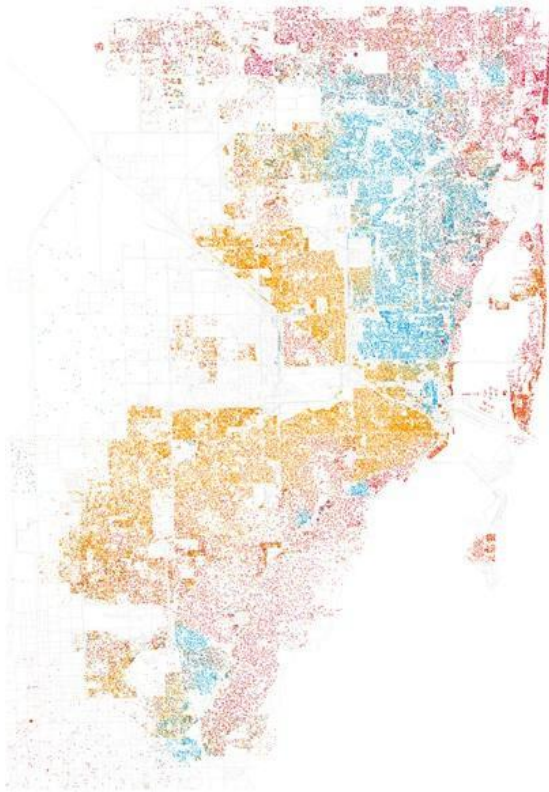
(All located in United States)



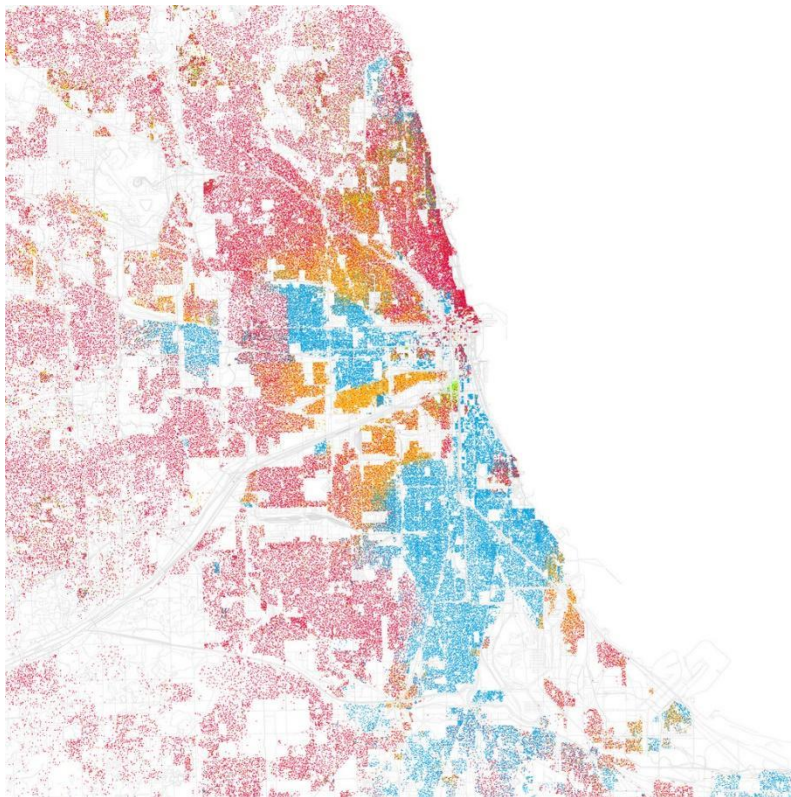
1. New York



2. San Francisco



3. Miami



4. Chicago

Which ethnic groups are represented by the colours? Match the two columns with the help of the maps!

Maps are colour-coded according to 2000 Census data where each dot represents 25 people.

Orange - Spanish

Green - Asian

Red - White

Blue – Black

Which is the most segregated among these cities?

Chicago or New York or Miami

Three answer could be accepted supported with a well-established, sensible reasoning.

(San Francisco is not correct because the dots are not as divided as it can be seen on the three other city maps)

Support your choice with a 3 sentences long discussion!

Students should analyze informations from maps primarily. For example:

- clearly visible ethnical boundaries
- colour-coded dots are well-separated and don't mix with each other
- homogenous districts

Which city has the largest Asian minority?

San Francisco or New York

(Both correct because the question is not referring specifically neither to numbers nor ratio. In ratio: San Francisco, in absolute number: New York is more segregated)

https://en.wikipedia.org/wiki/List_of_U.S._cities_with_significant_Chinese-American_populations

3. Odyssey of José

José lives in Northern Paraguay. He would like to move to his uncle, Jesús, who lives in Houston, US. Unfortunately José is a victim of political persecution in his country; therefore his passport has been cancelled by the authorities, which means he has to travel illegally.

He plans to leave in July 2016 and selected four alternative routes. Identify three natural hazards and/or political barriers on each of his possible routes, which José has to struggle with. (Total score: 20 points)



1. Mountains, earthquakes, volcanoes, tsunamis, landslides, storms, rains because of El Nino, boat traffic, deserts (Atacama, Gulf of California, Arizona, New Mexico, Texas), US-Mexico border, Mexican coast guard, ocean currents, hurricanes
2. Mountains, deserts (Atacama, Texas), numerous border crossing, US-Mexico border, territories under the influence of drug cartels, earthquakes, Panama Canal, volcanic activity, rains because of El Nino, landslides, rainforests, wild animals, tropical diseases, high rate of crimes in Central America and Columbia
3. Rainforests, many border crossing, lack of roads, US-Mexico border, Panama Canal, territories under the influence of drug cartels, volcanic activity, wild animals, tropical diseases, high rate of crimes in Central America and Columbia
4. Dry weather conditions in Brazil, bushfires, wild animals, hurricanes, tsunamis (Caribbean Sea), storms, reefs, boat traffic, US Coast Guard

Which route would you choose?

Every answer with a sensible reasoning could be accepted.

4. Geography of motorisation

Cars and mobility are vital parts of our everyday life, but apart from travelling with them, we should know more about their history and some whys and hows. (Total score: 40 points)

Name the country, which 'invented' the drive in services/facilities:

USA



Why exactly that country? Give three arguments for this specific origin!

1. One of the highest ratio of car penetration (over 800 cars/1000 inhabitants)
2. Large distances, urban sprawl
3. Lack of public transportation systems
- ...
4. Highly motorised country, economy, society, culture, spatial structure is based on motorisation, cheap/affordable petrol (gas) prices, developed infrastructure

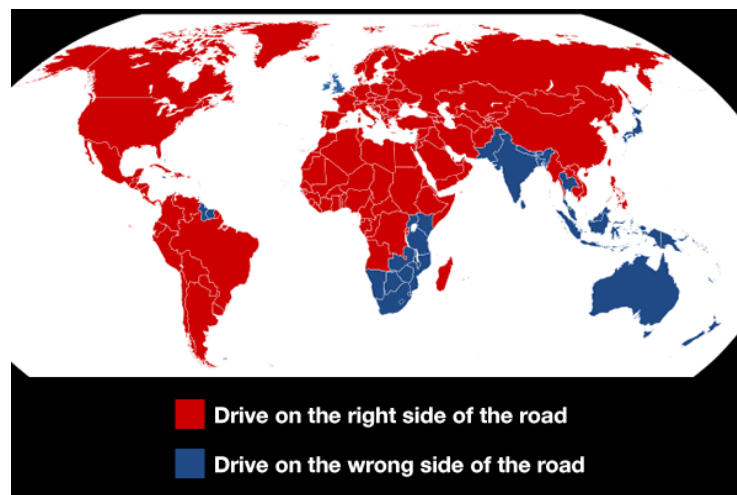
Identify two geographic peculiarities specifically influencing this design!



1. Lack of (public/available/parking) space in Japanese cities
2. Lack of own oil/petrol resources
3. Car tax based on cars' engine displacement and taxes are low for cars with small external measurements
- ...
4. Japanese people are usually smaller/shorter than Western average

Some countries drive on the left while others drive on the right.

Explain the above pattern of left side driving with one possible historical and one geographical reason underpinning your argument.



1. **Historical reason:** They are dominantly the former parts of the British Empire
OR

In the medieval age, people used to carry their sword on their left side, because it was easier to reach it with the right hand. Therefore they traveled on the left side on the road to shorten the time needed to prepare against an incoming attack.

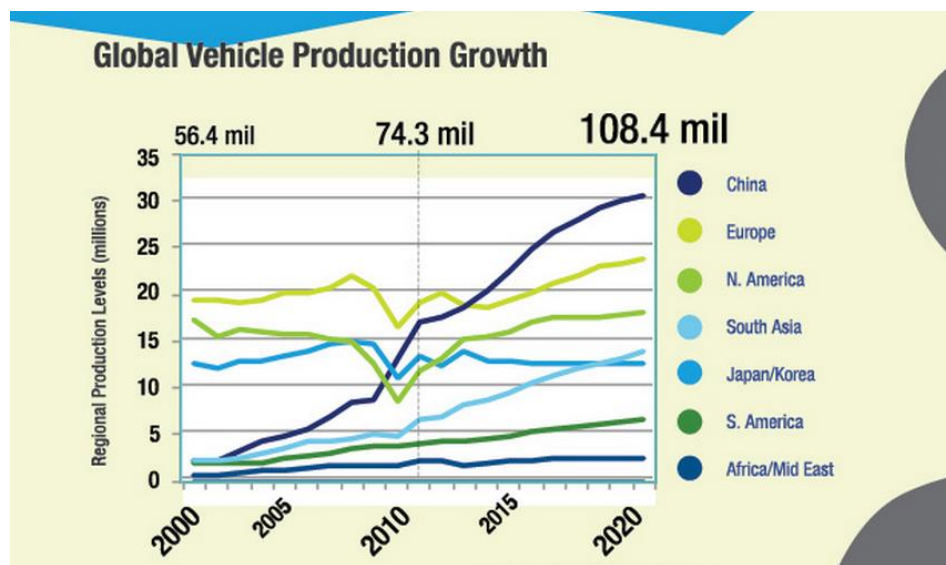
2. Geographical reason: Countries are (physically) geographically more or less separated from other parts of the world (no surface road connections).

OR

They were dominantly the former parts of the British Empire.

Note that the British Empire answer could be accepted only once.

Explain the above tendency using the following terms in your arguments. Use one term for each argument. One argument is one sentence.



1. Globalisation decreases differences of car usage between different societies. Globalisation of car industry is manifested by the expanding of production sites to newly emerging markets and demand centres./International brands emerging, similar vehicles appearing all over the world.
2. Emerging markets became the greatest buyers of new cars produced.
3. The growth of the production of vehicles is caused mainly by the increasing global purchasing power. /Purchasing power is still one of the most important impact on car markets (USA, Europe./The purchasing power dropped significantly as the crisis intensified./Countries where purchase power does not grow fast can't attract new factories and investment.
4. Economic downturn is clearly reflected in the car production data. Economic downturn resulted greater shocks in car sales of the developed countries. Consumer demand has risen significantly since the economic downturn.

Name two motorised countries for each picture where you could meet these traffic signs. One country can be mentioned only once.



1. Tunisia/Algeria/Mauritania/Mali/Morocco (French speaking Saharan countries)



2. Finland/Canada/Russia (taiga), any tropic humid climate /swampy country

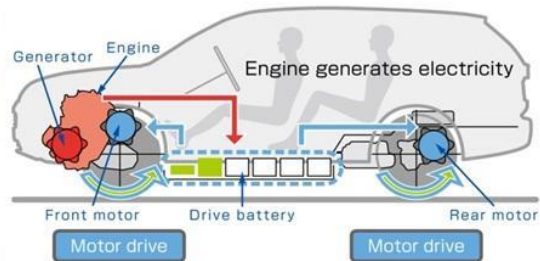


3. South Africa, Botswana, Namibia, Zimbabwe, Mozambique, Kongo, Zambia, Angola, Tanzania, Uganda, Sudan



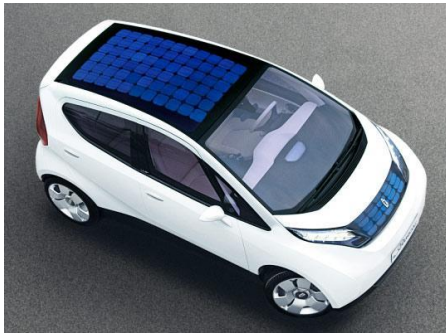
4. Sweden, Finland, Norway, Canada, USA (Alaska)

Fill out the missing country names in the following text.



Japan is the number one manufacturer of hybrid vehicles as both their automotive and electronic industry is highly developed, however, environmental consciousness makes **USA** the largest market of hybrid vehicles. Alcohol fuel is widely used in **Brazil** where they typically ferment ethanol from sugarcane. Fuel consumption is not among the main concerns of drivers in the **United Emirates** where overspeeding drivers can be stopped by the fastest and most exclusive fleet of police cars in the world. The number of plug-in electric vehicles is the largest per capita in the world in **Norway**, nevertheless this country has enormous oil reserves and hydroelectric resources. To cope with the serious air pollution problems of the metropolitan areas in **China**, there is a governmental goal to have five million battery-electric and plug-in hybrid electric cars on the road by 2020. In **Armenia** transport authorities estimate that 20 to 30% of vehicles use autogas (LPG), because it offers a very cheap alternative to both diesel and petrol, and there is a well-developed infrastructure of LPG filling stations also around Lake Sevan. Biofuel is getting widely used in certain districts of the rapidly motorising and populous **India** where Jatropha plant seeds provide cheap oil.

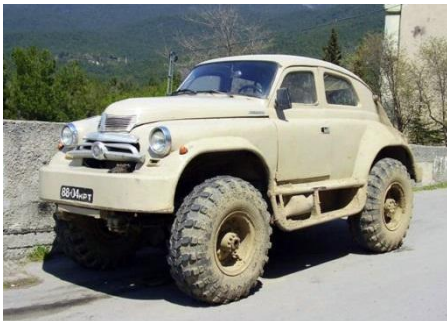
Name the concrete physical geographical impact that influenced these striking designs.
Give full sentences each.



1. Intensive insolation (sunshine) creates the opportunity to gain solar energy for electric cars.



2. Beaches are suitable for amphibious vehicle. Amphibious vehicles/buses can easily navigate in narrow canals, still lake surfaces or bays. Also it is a tourist attraction in its own.



3. Extremely wet surfaces, swamps or loose ground/sand might be only driveable with high ground clearance cars with specific vehicles/tyres, bigfoots.



4. Arctic ice surface is unsuitable for towed vehicles.



5. Dunes in sand deserts are dangerous for cars because of the loose soils and sudden elevation extremities.

5. Cats

As you may know, the absolute stars on the internet are cats – for example there are 2 million cat-related videos on YouTube with 26 billion views (as of August 2015). Therefore we believe that an online test could not be complete without some cat-related questions. Choose the correct answer to each question. Only one answer is correct per question. (Total score: 10 points)



This picture was taken on a very famous island, important for both tourists and archaeologists. The country this island belongs to is in a long-running border dispute with one of its neighbours.

Which one is that neighbour?

- a. Greece
- b. Georgia
- c. Turkey
- d. Albania



Siamese cat in a Buddhist temple. At the end of the 19th century this Asian kingdom was a colony of the...

- a. British empire
- b. French empire
- c. Japan empire

- d. None of them



Worshipping cats was more or less common in ancient Egypt. Nowadays the army of Egypt regularly intervenes in the civil war going on in...

- a. Eritrea
b. Libya
c. Yemen
d. Syria



This kind of cat is called the 'Russian blue', and is well known for its shyness. Russia however, is maintaining an aggressive foreign policy with border-related strives demonstrating it in the last decades. One of these unsolved, but still ongoing conflicts is the case of Transnistria.

Which countries are involved politically in this feud?

- a. Georgia, Azerbaijan and Armenia

- b. Ukraine, Moldova
- c. Lithuania, Belarus, Poland
- d. Kazakhstan, Uzbekistan



Cats lying on the ornaments of a temple in an Asian country.

Name the country, which has an unclosed territorial dispute with Russia about the Kuril Islands?

- a. Democratic People's Republic of Korea
- b. People's Republic of China
- c. Japan
- d. Republic of Korea



Italy could be described with one of the highest cat per capita percentage in the world. Italy came into existence (in fact, was unified) in the second half of the 19th century.

Which one of the following territories joined the Italian state last?

- a. Rome and the Papal State
- b. South Tyrol
- c. Sardinia
- d. The city of Trieste



Although it belongs to the largest species in the family of cats, the cougar is very closely related to smaller felines, including the domestic cat. It lives throughout the mountainous areas in both North- and South America, including remote areas of the United States. These areas came under the authority of the States in several ways.

Which one of the following statements is not true?

- a. They purchased Texas from Mexico.
- b. They conquered Arizona and New Mexico among others in the Mexican-American war.
- c. They purchased Louisiana from France.
- d. They possessed the territory of Washington (state) by the by the Anglo-American Convention of 1818.



Abyssinian cats were first brought to Europe in the 19th century by British colonial soldiers.

The question is very simple, how does the country Abyssinia called today?

- a. Kenya
- b. Sudan
- c. Somalia
- d. Ethiopia



This leopard-like cat has the name of a bay in the Indian Ocean, between India and Myanmar. At the shores of this bay, there is also a country, which was an exclave of another Asian country until 1971.

What is the name of the last mentioned country?

- a. Sri Lanka
- b. Malaysia
- c. Pakistan
- d. Indonesia



This extremely short-tailed – or even tailless – breed of cat called Manx came from an island (Man) lying in the Irish Sea. The island is a so called "crown dependency" which means it has special relations with Great Britain.

Which one of the following territories has the same status?

- a. Bermuda Islands
- b. Jersey and Guernsey
- c. New Zealand
- d. Newfoundland

6. When media fails

Columbus gets a lot of flak for mistaking the Americas for India, but he had no ways to use a GPS device or consult Google. Modern media, TV-channels and especially the news should not claim the same. Here are some recent geographical mistakes of the media; it is your turn to find the mistakes.

You will see some maps grabbed out from media broadcasts below. Some of them depict maybe more than one incorrect feature. Identify the mistakes on the maps below! (Total score: 6 points)



Sydney



Czechslovakia



Egypt placed between Syria and Iran



Toronto in the USA; Georgia and New Mexico are not cities

7. Top-7 Geography movie mistakes

A lot has been written about mistakes in historical movies. But, what about geography mistakes? Hollywood has not only taught us history facts wrong, but it has also managed to distort the image we have about many parts of the world. So we decided to make a list with some of the biggest geography failures in movies. They are listed according to how big (or stupid) the mistakes are and how famous the movie is.

The seven short texts below are about geographical mistakes in movies. You will find five correct and five incorrect ones. Read the texts to decide if they are correct or incorrect. If you find a mistake: write the words, which are mistaken in the boxes and add the correct answer. Be careful, some of the incorrect texts contain only one mistake, some of them contains more than one. (Total score: 14 points)

7 - Troy

In one of the scenes we can see a few llamas walking among people. Llamas are from **South-east Asia (South America)**, so one could wonder what they were doing in Greece, so far away from their natural habitat. Were they singing the llama song? Maybe.

We also accepted the answer “Troy is not in Greece, but Turkey” - because it’s true, according to the modern borders.



6 - Die Another Day

In the beginning, this movie shows us James Bond literally surfing his way into Korea (some place close to the border between North and South Korea). The ridiculous thing is that it is quite impossible to surf in Korea (in any of them). In that part of the world you would need at least a typhoon to generate a wave high enough to do some surfing, and even that wave would not be even half as high as the huge one we see in the movie.



5 - Gladiator

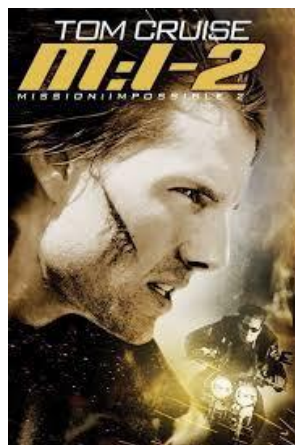
After winning the battle in the beginning of the movie, Maximus is betrayed and attacked in the Roman camp. He gets injured but lives and steals a horse to get to his family. But the battle was in Germania (Germany) and his house is in Emerita Augusta (Merida, north

(west)of Spain), so he would have to travel about 4.400 (1,400) miles by horse to arrive. Remember that terrible wound Maximus got in his shoulder before beginning the journey? Well, he had time to die many times due to infections in his LONG way back home.



4 - Mission: Impossible II

Everybody in Spain contemplates the scene in the movie in which Anthony Hopkins tells Tom Cruise in Seville, Portugal (Spain) that in order to worship the saints, people burn them. That is pure nonsense. There is a very entertaining festival in Valencia, Portugal (Spain) where people go to burn things, but it has nothing to do with saints or religion. A believing Catholic setting a saint on fire makes as much sense as a religious Jew eating pork.



3 - Armageddon

In the end of the movie, people from all over the world go out to watch the meteorite explode in the sky and being glad for not dying a horrible death after the crew of the spaceship successfully planted the nuclear bomb on that thing. We see different parts of the USA, India, Turkey... And it is daytime everywhere! Well, I guess the ending was so epic that the Sun decided to break the rules of astronomy and shine at the same time all over the world.

OK, this was pretty much complicated... we thought that the text is correct, because we did not put any mistakes in it. But much to our astonishment some of you found two possible mistakes: first “watch the meteorite explode” is incorrect, because we call it a meteor until the impact and it is correct only after that to name it a meteorite . Secondly there is an 11 hours difference between India and the USA East Coast time zones and some of you discovered that it is completely possible to be dawn in one scene and afternoon in the other, hence the daylight in the two scenes . So, we accepted the both of the answers here, with one of the correct arguments above.



2 - Mr and Mrs Smith

There is a "romantic" part in the movie (even if it is a hack & slash action), which supposed to take place in Bogota, Uruguay (**Columbia**). The city in the movie is an awfully hot town with colourful old and small houses with sirens screaming all of the time and palm trees (yes, again, palm trees). Bogota is a huge city with even bigger buildings (just like any capital in the real world) without any sirens screaming all the time and has very cold weather. And, as you can imagine, no palm trees.



1 - Krakatoa, East of Java

This movie became part of history as the first disaster movie ever, which in turn became a very popular genre. This movie had a great deal of impact making this genre popular. But the real disaster happened when they took a look on the map after giving it the title: they saw that Krakatoa is, actually, west (**East**) of Sumatra (**Java**). The most stupid and obvious geography movie mistake ever? Probably yes, but this genre is full geographical nonsenses, otherwise these movies would not be entertaining.

Note that each answer is acceptable for this question.



8. Natural hazards in everyday life

Nature is literally shaping our environment everyday without most people noticing it. There are some very interesting and dangerous phenomena which make dealing with them inevitable thus require us to get acquainted with them. Let's see how much do we know about this juicy topic!

Study the pictures below and name the phenomena! Try to find out the 3 most common processes causing them and list 3 options for prevention! (Total score: 28 points)



Name of the phenomenon:

flash flood

Common causes:

heavy rainfall, storms (cyclones) & hilly/mountainous surroundings [steeper slopes] & soaked soil & impermeable surface coverage/soil properties/extensive agricultural fields (poor drainage conditions) & snowmelt & ~ damaged dams

Possible prevention:

reservoirs, detention basins, ~ building dams & forestation [better interception] & numerical modelling and informing locals, warnings & increasing capacity of water drainage system in settlements & ~ mechanical barriers, levees, water gates, retaining walls



Name of the phenomenon:

bank erosion (abrasion)

Common causes:

fluctuation of water level [dam, floods-droughts] & big difference between high and low water (high flood levels) & geology/sediments & land use activities & channel instability [streamline displacement, river regulations, meandering, human impacts] & springs, soaked background area & change of riparian vegetation & wave action [wind, boats] & undercut, fastening sections of water flow

Possible prevention:

bank stabilizations [gabion, root wads, living plants, ripraps] & stream rehabilitation [natural state], ~ river regulation [control bends] & instream structures [weirs, etc.] & flow and depth control/channelization/canalization [side-effects!] & replant riparian vegetation



Name of the phenomenon:

land subsidence, sinkhole

Common causes:

aquifer-system compaction & drainage of organic soils & underground mining & hydrocompaction, natural compaction & sinkholes & thawing permafrost & suffusion, water infiltration & karstic processes & earthquakes

Possible prevention:

fill subsurface cavities [after mining] & prevent overpumping [ground water] & check ground porosity [geophysics – oil wells, gas extraction] & check physical characteristics of soil [clays] & reduce allowable load [houses, traffic] & ~ underpinning



Name of the phenomenon:

soil erosion, rill/gully erosion, areal-linear erosion

Common causes:

seasonal vegetation coverage & heavy rainfalls & ploughing [in the direction of steepest slope, on too steep slopes] & degradation of physical characteristics of soil & droughts + wind & natural erodibility of soil types & overgrazing & changing natural drainage systems

Possible prevention:

constant land cover & forestation & terraced cultivation/changing slope characteristics & vegetative barriers [shrub, tree lines, reduce effect of wind] & organic manures [improve soil structure] & constructing drainage channels

9. Music in Geography - Geography in Music

Some songs or band names are related to cities and places, it is up to you match the song titles or band names with the answers! (Total score: 7 points)

Shakira

- a. Africa
- b. Asia
- c. Europe
- d. Australia

Toto

- a. Africa
- b. Asia
- c. Europe
- d. Australia

KFT

- a. Africa
- b. Asia
- c. Europe
- d. Australia

The mental abilities of people living in ... are being question by the band Green Day. In their famous song the band Green Day questions the mental ability of people living in ...

- a. USA
- b. Canada
- c. Mexico
- d. California

What was the surname of Dani about whom Red Hot Chili Peppers wrote a song?

- a. Mississippi
- b. Alabama
- c. New Orleans
- d. California