



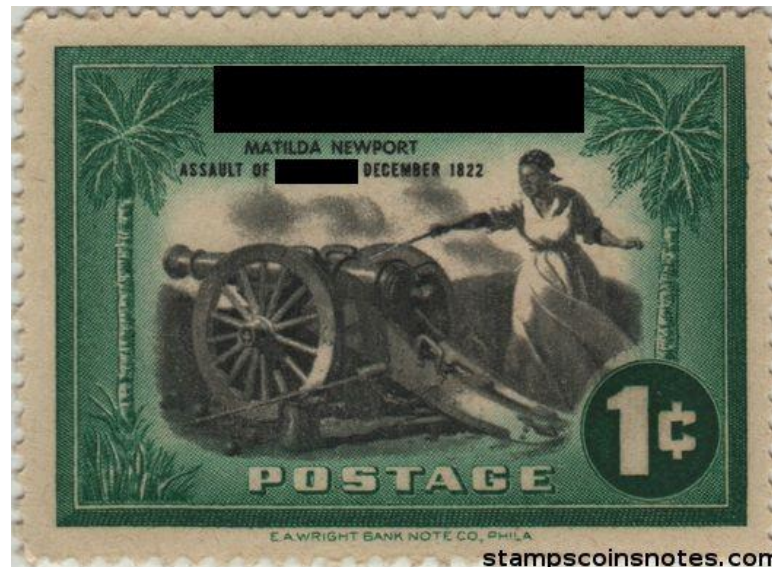
# Hungarian Geographical Contest

## Multimedia Test

- You have 25 questions to answer and 30 minutes time.
- There is always only ONE correct answer.
- Mark your choice on the answer sheet.
- You are not allowed to use any external help, including internet connection. Do not close the test window, do not switch to any other window on the computer.

Q.1.: Which country are these pictures related to?

- A) Sierra Leone
- B) Republic of South Africa
- C) Liberia
- D) Egypt





Q.2.: What is the name of the phenomenon?

- A) flash flood
- B) lahar
- C) mafic lava eruption
- D) nuée ardante



Q.3.: When this image was taken for the inhabitants of Kolkata it was a(n):

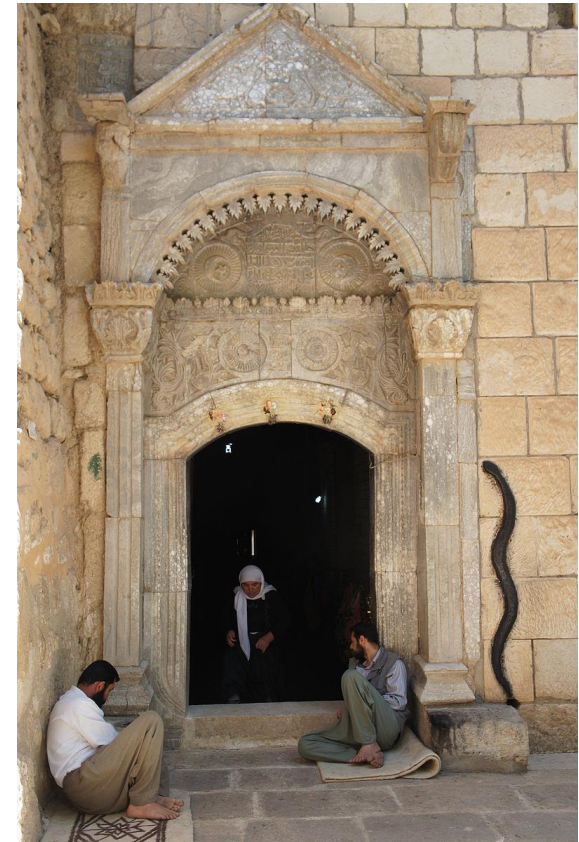
- A) autumn afternoon
- B) summer morning
- C) winter morning
- D) spring afternoon





Q.4.: All four pictures are related to one religious group. Which one is this?

- A) Yazidism
- B) Hinduism
- C) Sikhism
- D) Coptic orthodox Christianity



Q.5.: What phenomenon can be detected in this picture?

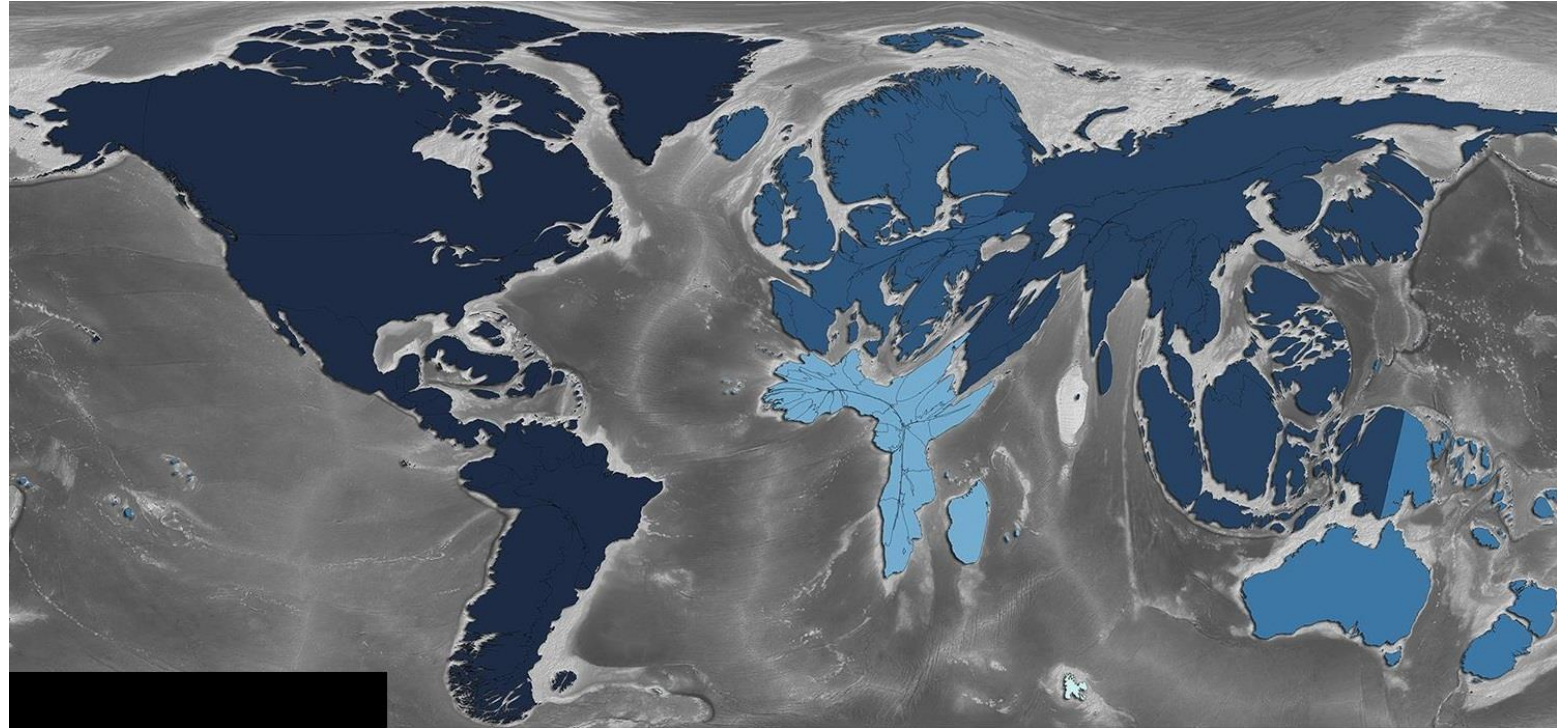
- A) an anticyclone on the northern hemisphere
- B) an anticyclone on the southern hemisphere
- C) a cyclone on the southern hemisphere
- D) a cyclone on the northern hemisphere





Q.6.: The countries of the world have been resized. According to which factor have they been transformed?

- A) average elevation
- B) total area of forests
- C) total length of their coastline
- D) population number of aboriginals



Q.7.: In this satellite image a/an [...] can be seen. ( $45^{\circ} 57' 54''$  N,  $63^{\circ} 18' 18''$  E)

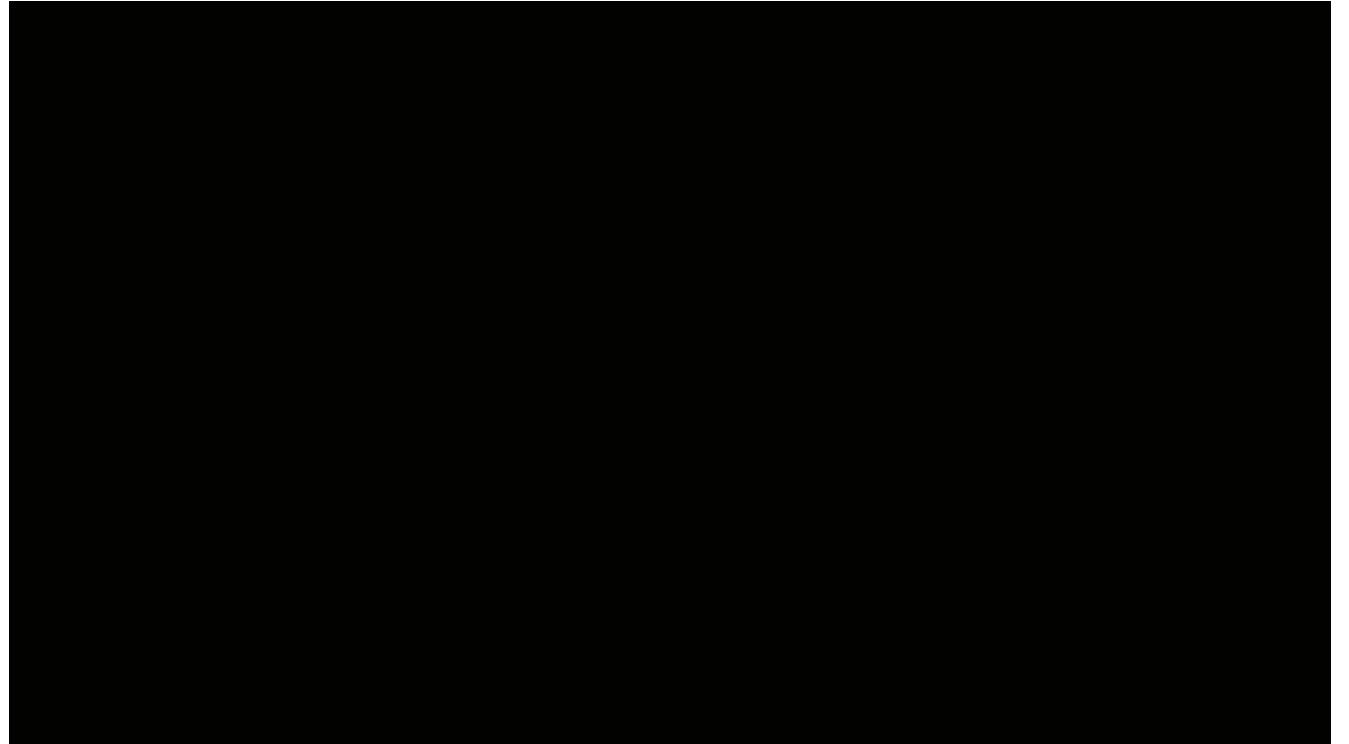
- A) desalination plant
- B) Cosmodrome
- C) cotton fields
- D) geothermal power plant





Q.8.: This animation represents the distribution, pattern and/or movement of:

- A) ocean garbage patch
- B) phytoplankton
- C) marinal nuclear explosions
- D) leaking oil tankers



Q.9.: The geomorphological feature in this picture is the result of the process of:

- A) weathering
- B) deflation
- C) abrasion
- D) leaching





Q.10.: This maps represents:

A) light pollution density

C) stock exchange connections

B) Chinese capital investments

D) internet connection density



Q.11.:The process caused by Scrat is called:

- A) orogeny
- B) global warming
- C) rifting
- D) continental drift





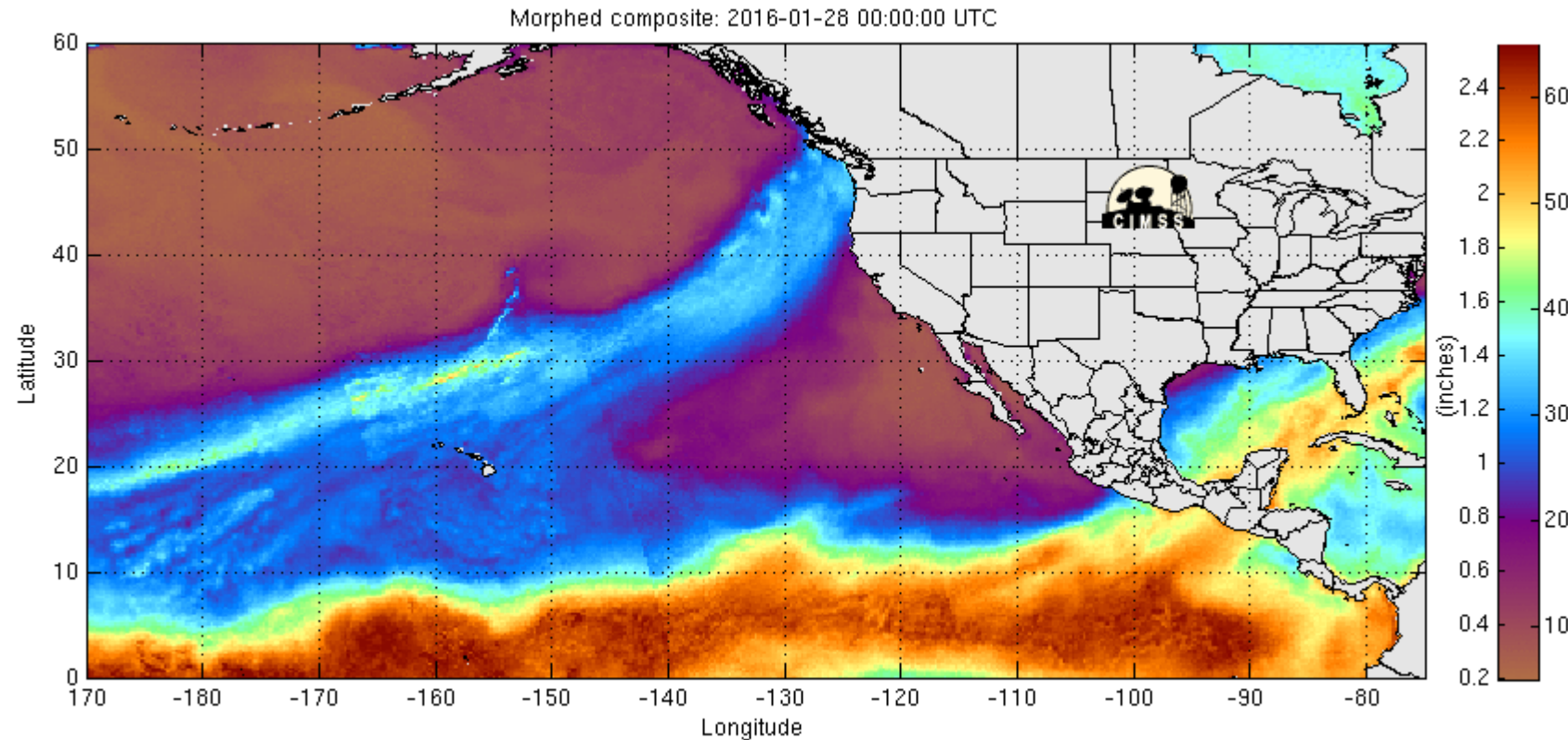
Q.12.: The vivid red colour of the water is the result of:

- A) algal bloom
- B) waste of slaughterhouses
- C) heavy metals originating from mines
- D) discharge of urban wastewater



Q.13.: The so called Pineapple Express results in heavy rainfalls and snow on the west coasts of the US and Canada. But what is exactly Pineapple Express?

- A) ocean current
- B) convection current
- C) atmospheric river
- D) hurricane





Q.14.: The changes in this historical maps are the results of which process?

A) gentrification

B) urban sprawl

C) counterurbanisation

D) immigration





Q.15.: In the region seen in the picture lives a large ethnic group in a mostly contiguous area spanning across four countries. Which are these countries?

- A) Turkey, Iraq, Syria, Jordan
- B) Turkey, Iraq, Iran, Syria
- C) Turkey, Iraq, Iran, Armenia
- D) Turkey, Iraq, Syria, Armenia





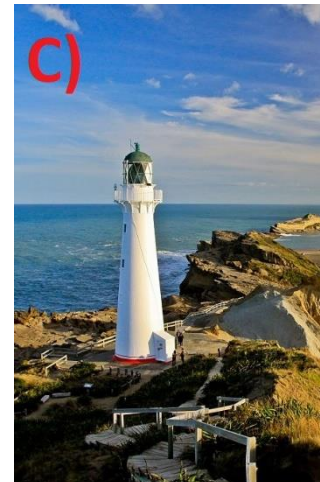
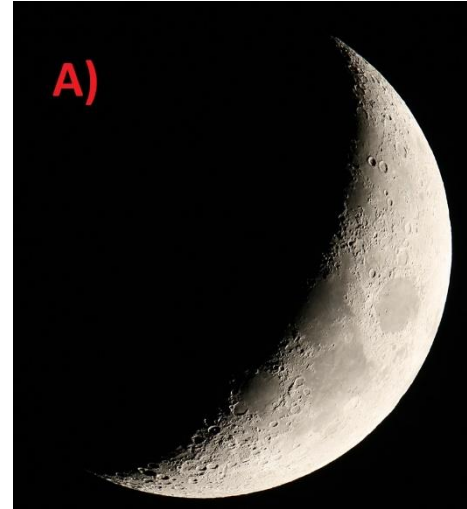
Q.16.: The geomorphological feature shown by the red arrow was formed by a/an:

- A) river
- B) glacier
- C) high tide at sea
- D) ice sheet



Q.17.: Film industry is a rapidly growing branch of services. Which of the following pictures was NOT an inspiration for an/a entertainment/movie maker company logo?

- A) Picture A – Dreamworks
- B) Picture B – Paramount Pictures
- C) Picture C – Castle Rock
- D) Picture D – Warner Brothers





Q.18.: The inhabitants of this village are living in an island country . Which one is this country and on which island are they living?

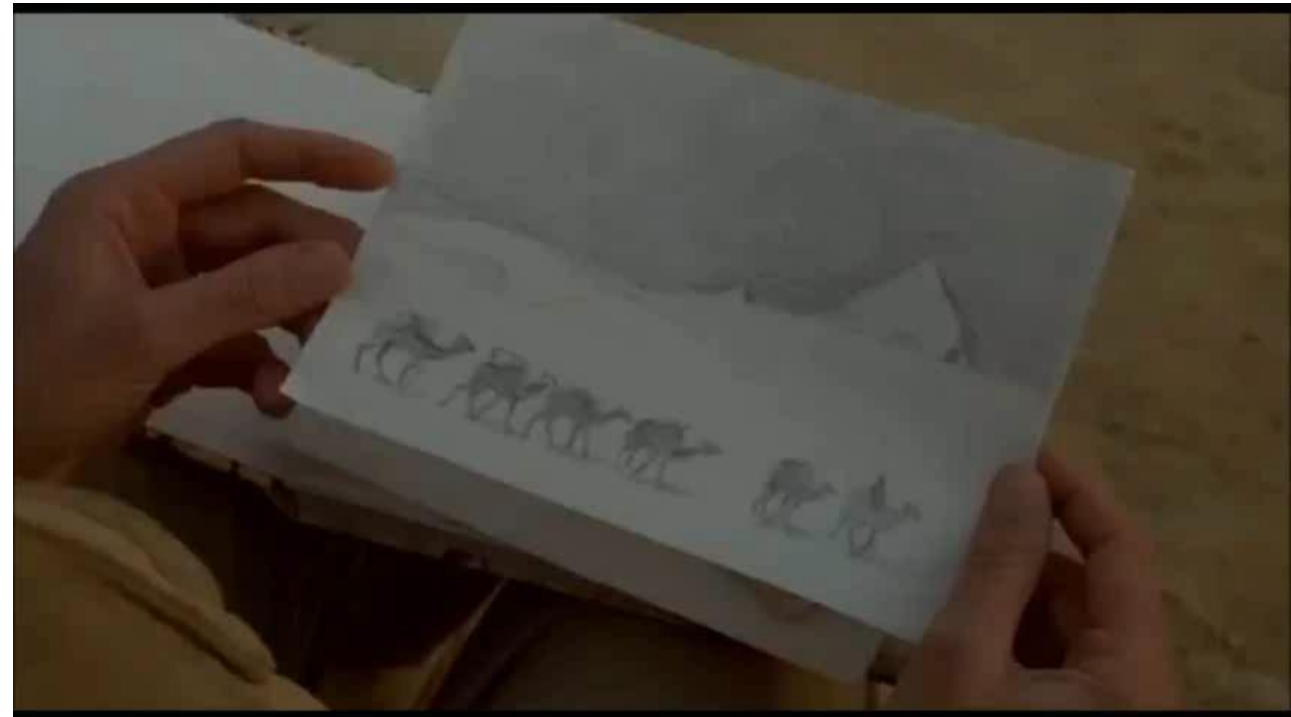
- A) Indonesia – Sulawesi
- B) Philippines – Mindanao
- C) Papua New Guinea – New Guinea
- D) Malaysia – Borneo





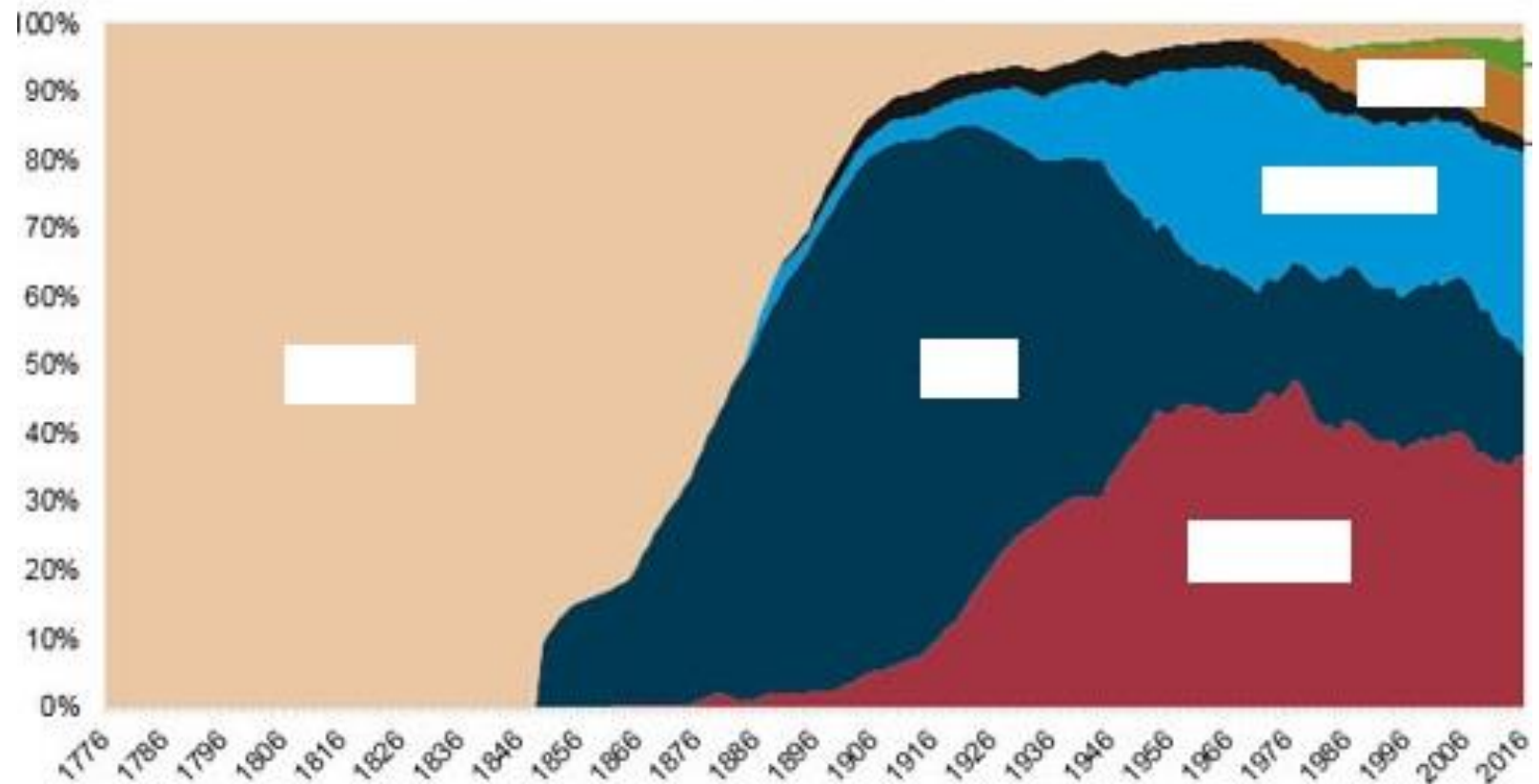
Q.19.: In the movie „*The English patient*” László Almásy and his group found a cave in the Sahara with interesting cave paintings. These paintings prove that:

- A) The gravity on Earth was much smaller, people were floating in the air
- B) There were more survivors after the Genesis flood
- C) People were living in tribes, they hunted together and could already swim across the Nile
- D) The climate was cooler in the Sahara, even with open water surfaces and the region was inhabited with ancient tribes



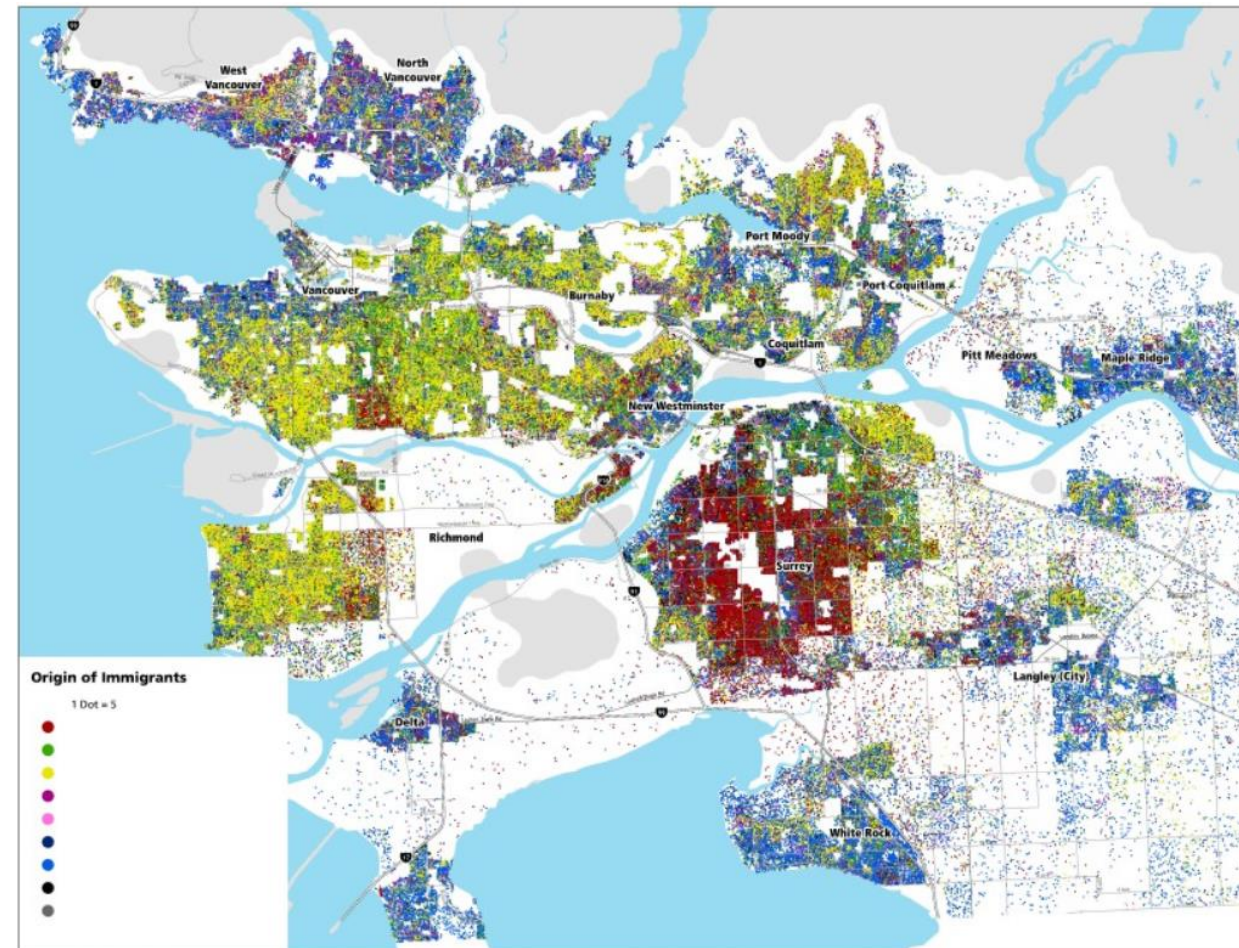
Q.20.: The diagram shows the energy consumption in the USA. Which energy source is represented by light blue?

- A) petroleum
- B) natural gas
- C) hydroelectric
- D) nuclear



Q.21.:This is a ethnic/race map of Vancouver city in Canada. People immigrated from the same area tend to cluster together in districts. Which colour resembles immigrants from Europe?

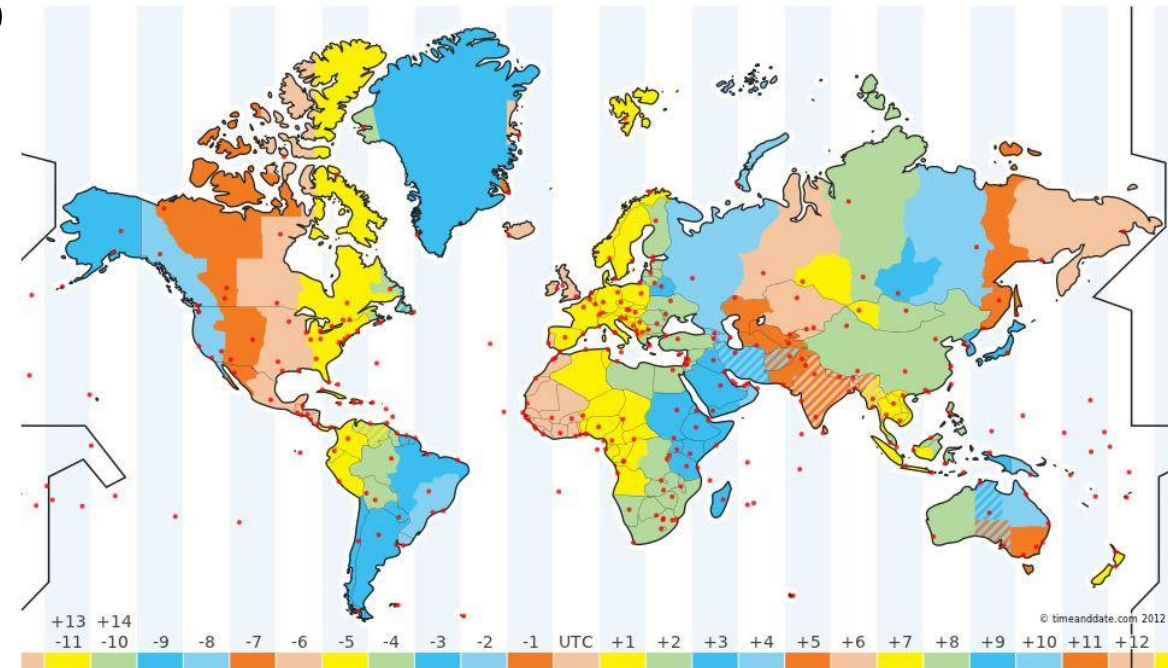
- A) red
- B) yellow
- C) blue
- D) green





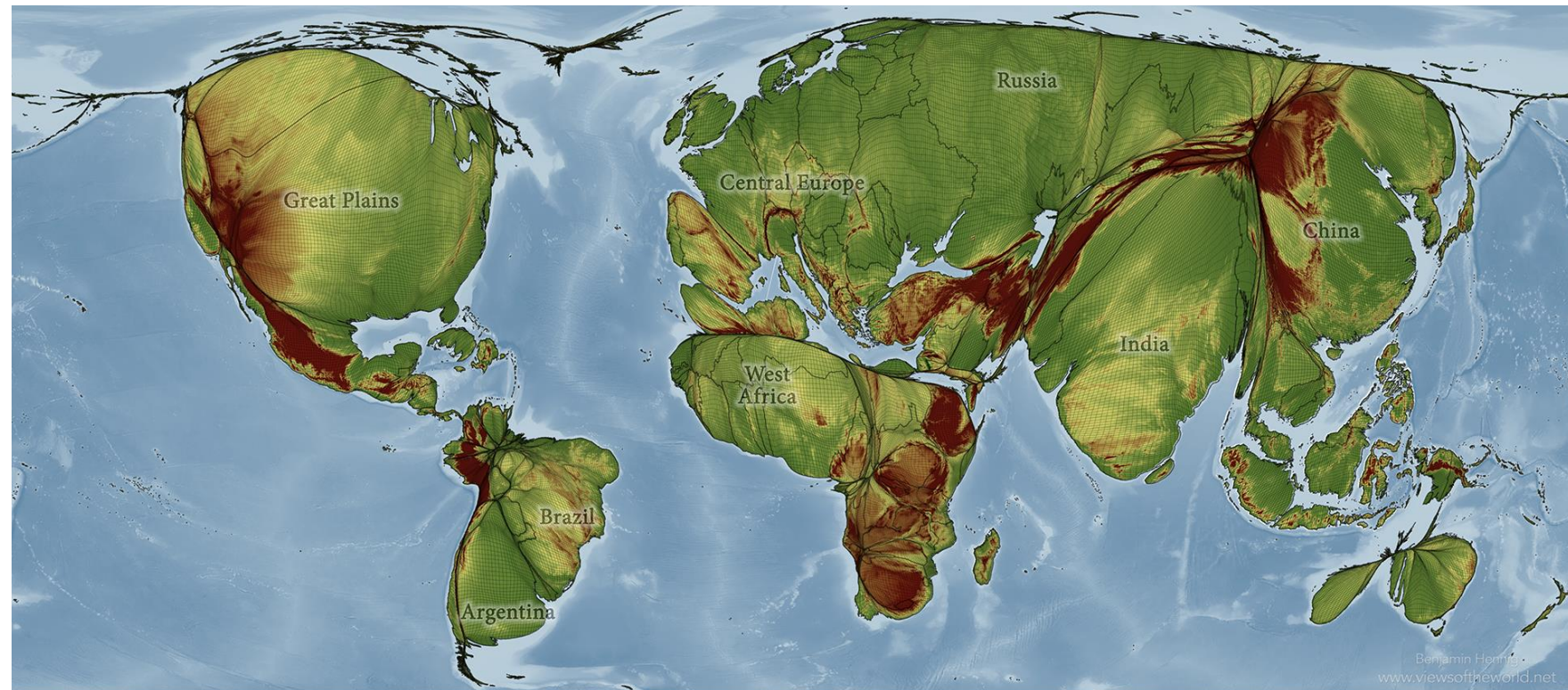
Q.22.: UN officers from New York, Brussels and Singapore want to hold a video conference on 7th April. The officers are available for such emergency calls from 7 am till 9 pm. They adjust the exact start time to the officer from NYC. According to NYC time when should they start the call to be okay for everyone?

- A) 8 am
- B) 10 am
- C) 3 pm
- D) 4 pm



Q.23.: This map was transformed due to the abundance of a vital element of life in the area. Which is this element?

- A) natural gas
- B) croplands
- C) drinking water
- D) sunlight



Q.24.: This natural beauty appears in our atmosphere. But in which sphere exactly?

- A) stratosphere
- B) troposphere
- C) thermosphere
- D) mesosphere





Q.25.: In which country iGeo has NOT been held until 2018?

- A) Portugal
- B) Poland
- C) Romania
- D) Taiwan



You have reached the last slide of the Multimedia Test

Click on the arrow ← or ↑ to go back to the previous page(s) if you wish to check your answers

OR

Wait silently until the time is up.

