

SOURCE BOOKLET

Pécs, 19/01/2013

Do NOT open the booklet before instructed to do so by the supervisor.

Your answer will NOT be marked if you write them in this Source Booklet.

Source 1¹

Picture 1



Picture 2



Picture 3



Picture 4



¹ Sources:

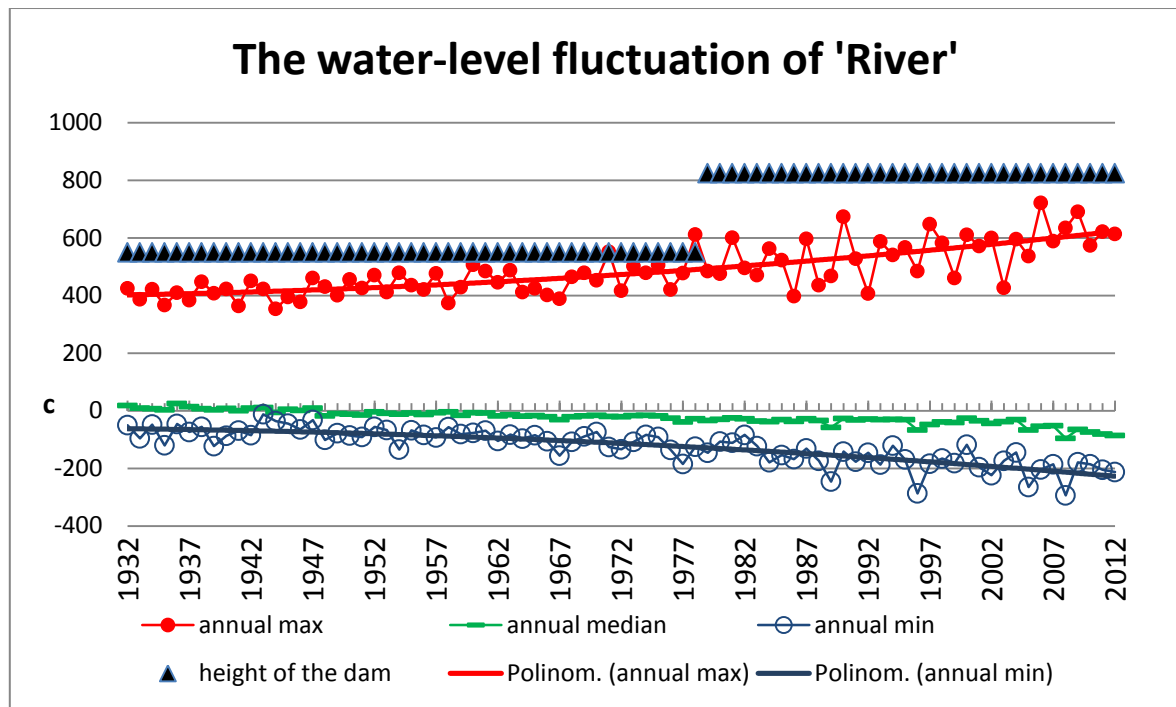
<http://www.kenwooi.com/2010/01/passage-to-dublin.html>

<http://www.guardian.co.uk/travel/2011/oct/12/top-10-independent-shops-edinburgh>

http://www.inspiringcities.org/wp-content/uploads/citydevelopment/citywalls/wall_of_belfast_2_photo_by_nznomad.jpg

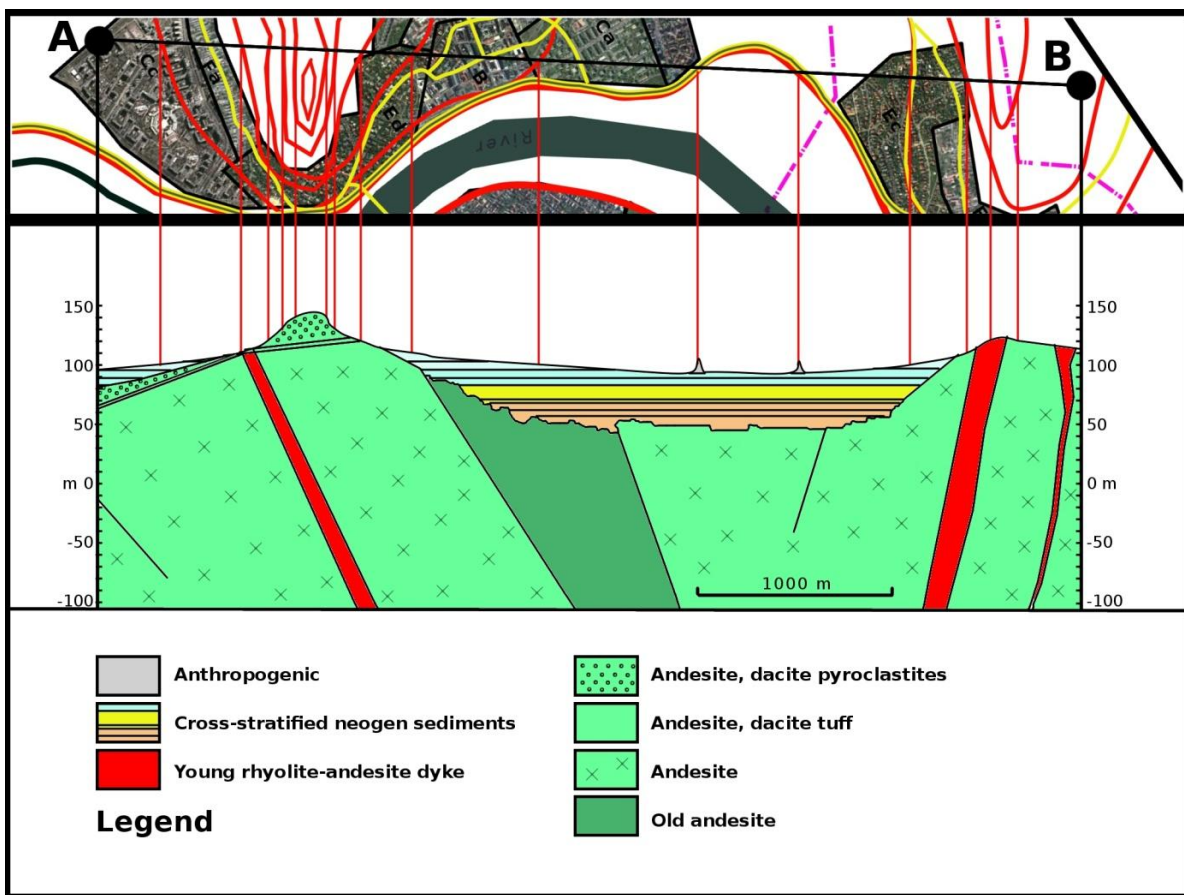
http://en.wikipedia.org/wiki/File:Causeway-code_poet-4.jpg

Source 2A



Source: edited by Orbán, K. 2012.

Source 2B



Source 2C

District	Daytime Population (people)	Night Population (people)	Population (people)	Population Density (people/km ²)	Area (km ²)	Average income*	Unemployment rate (%)	Commercial units	Cars per household	Size of household **	% of Sum A-J pop.
A	3,000	2,500	25	48	0.52	0.39	33.3	1	0.50	6.25	0.0
B	55,000	8,200	7,800	41,053	0.19	1.25	4.2	246	0.18	1.65	10.9
Ca	6,300	9,500	9,000	29,032	0.31	0.91	5.1	17	0.54	2.47	12.6
Cb	1,400	3,200	3,100	23,846	0.13	1.16	3.8	3	0.62	2.72	4.3
Cc	19,000	25,000	24,500	41,525	0.59	0.88	8.6	31	0.67	2.54	34.3
D	1,100	4,700	4,700	33,571	0.14	1.19	3.4	8	0.85	3.16	6.6
Ea	2,500	7,150	7,300	5,448	1.34	0.97	5.7	13	0.92	2.81	10.2
Eb	2,600	6,800	6,900	7,188	0.96	1.01	5.2	24	0.99	2.96	9.7
Ec	900	2,300	2,300	6,053	0.38	1.35	4.0	2	1.12	3.07	3.2
Ed	800	1,650	1,700	4,722	0.36	1.85	2.9	7	1.21	3.45	2.4
Fa	250	300	280	1,867	0.15	0.85	11.1	3	0.71	2.14	0.4
Fb	250	360	350	1,591	0.22	0.74	12.6	2	0.84	2.08	0.5
Fc	220	320	300	1,875	0.16	0.91	10.5	4	1.03	2.36	0.4
G	150	10	5	23	0.22	0.63	25.0	1	1.00	2.50	0.0
H	15	2	0	0	0.01	0.00	-	1	-	-	0.0
I	800	15,000	5	56	0.09	0.76	0.0	7	1.00	2.50	0.0
J	3,100	3,900	3,200	29,091	0.11	0.53	27.8	49	0.15	4.18	4.5
Sum A – J	97,385	90,892	71,465		5.88			419			100,0
Averages A – J				12,154		0.90	9.6		0.73	2.76	

*1.00 is the average income of the population live in A–J districts.

**Person

Source 3

Location of the data: 0°E, 51°N.

1971–2000 averages						
	Max Temp	Min Temp	Days of Air Frost	Sunshine	Rainfall	Days of Rainfall ≥ 1mm
Month	[°C]	[°C]	[days]	[hours]	[mm]	[days]
Jan	7.9	2.4	7.4	45.9	51.9	10.9
Feb	8.2	2.2	7.4	66.1	34.0	8.1
Mar	10.9	3.8	2.9	103.2	42.0	9.8
Apr	13.3	5.2	1.1	147.0	45.2	9.3
May	17.2	8.0	0.1	185.4	47.2	8.5
Jun	20.2	11.1	0.0	180.6	53.0	8.4
Jul	22.8	13.6	0.0	190.3	38.3	7.0
Aug	22.6	13.3	0.0	194.4	47.3	7.2
Sep	19.3	10.9	0.0	139.2	56.9	8.7
Oct	15.2	8.0	0.3	109.7	61.5	9.3
Nov	10.9	4.8	3.0	60.6	52.3	9.3
Dec	8.8	3.3	6.9	37.8	54.0	10.1
Year	14.8	7.2	29.1	1461.0	583.6	106.5

Source: <http://www.metoffice.gov.uk/climate/uk/averages/19712000/sites/greenwich.html>

Source 4A



Photo A

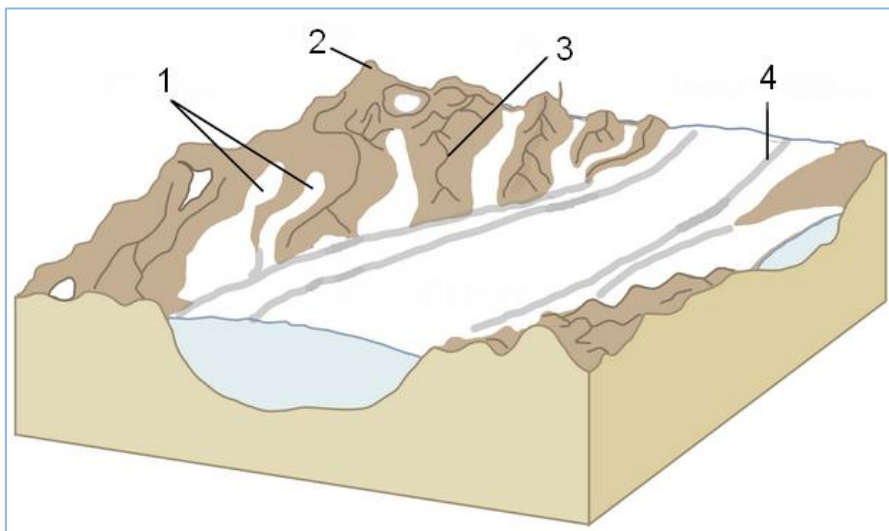
(Source: http://en.wikipedia.org/wiki/File:Mesquite_Sand_Dunes.JPG)



Photo B

(Source: http://en.wikipedia.org/wiki/File:Grosser_Aletschgletscher_3178.JPG)

Source 4B



(Source: http://en.wikipedia.org/wiki/File:Glacial_landscape.svg)